

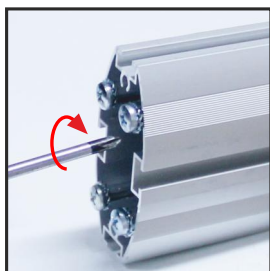
# MULTI POSTER STAND

## Unit Piece

■ Dynamic Profile	2
■ Steel Base and screw set	1
■ MDF Shelf	4
■ Poster Frame	2
■ End Cap	1
■ Connector	2
■ Dynamic Apparatus	4



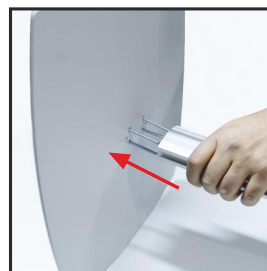
## Assembling



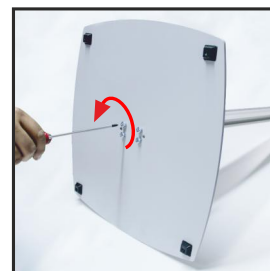
1- Remove the screws on the profiles with using a screwdriver.



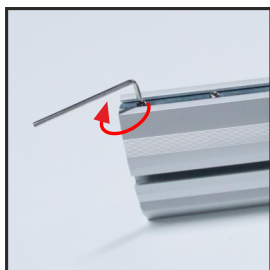
2- Make a position the screws on the base.



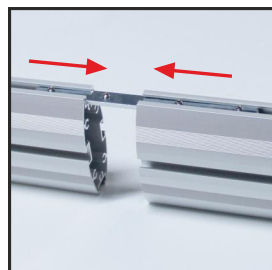
3- Push the screws forward through the profile channel.



4- Make it stable by tightening with screwdriver.



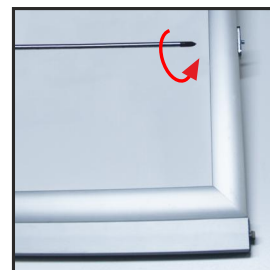
5- Loosen the connection part on the profile with the allen key.



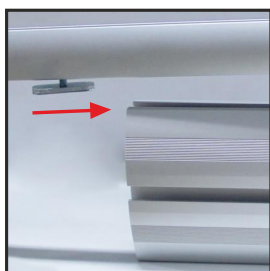
6- Fit the connection profile between the two profiles.



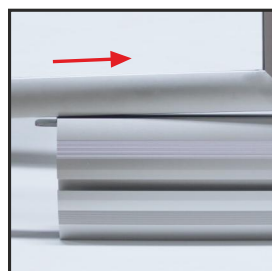
7- Fix the profiles to the connection profile with the allen key.



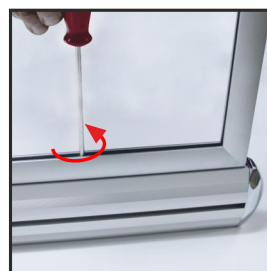
8- Use a screwdriver to loosen the dynamic apparatus on the edge of the sliding frame.



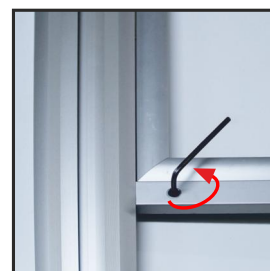
9- Detail.



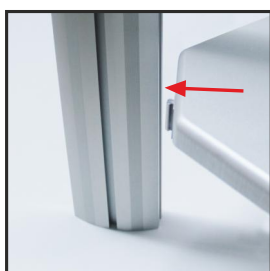
10- Drag the frame's dynamic apparatus to the profile.



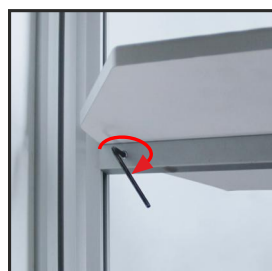
11- Tighten the screws to the desired position and tighten.



12- Tighten the stabilizing part at the bottom to prevent shaking with the allen key.



13- Place the MDF rack in to the profile.



14- Stabilize the rack with the allen key.

