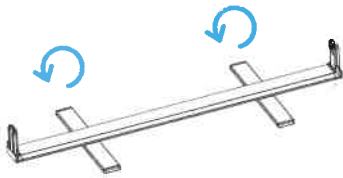


Whirlwind® v65 Brighting Roll Up INSTRUCTION FOR INSTALLATION

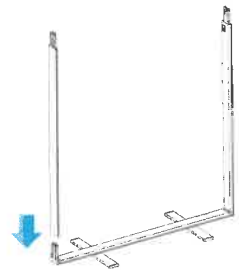
① Make the feet rotate 90°



② Match the same number together to connect correctly



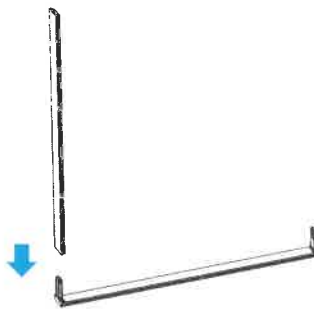
③ Match the same number together to connect correctly



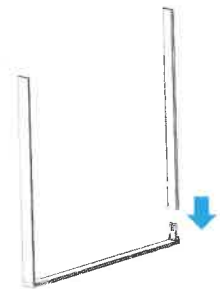
④ Slide the pole to fix



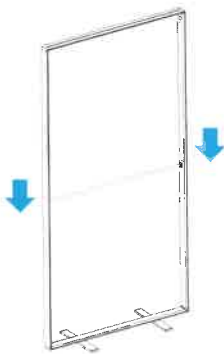
⑤ Match the same number together to connect correctly



⑥ Match the same number together to connect correctly



⑦ Connect the upper half and lower half



⑧ Put on backlit fabric



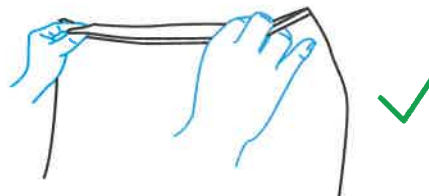
⑨ Put on graphic



⑩ Connect the power cable then connect the power



Attention: Take out backlit fabric by two hands



Disassemble in the reverse order.

Caution : Make sure the graphic is folded neatly and save it in bag after using, to avoid wrinkle.

PLEASE CONTACT US IF THERE IS ANY QUESTIONS.